

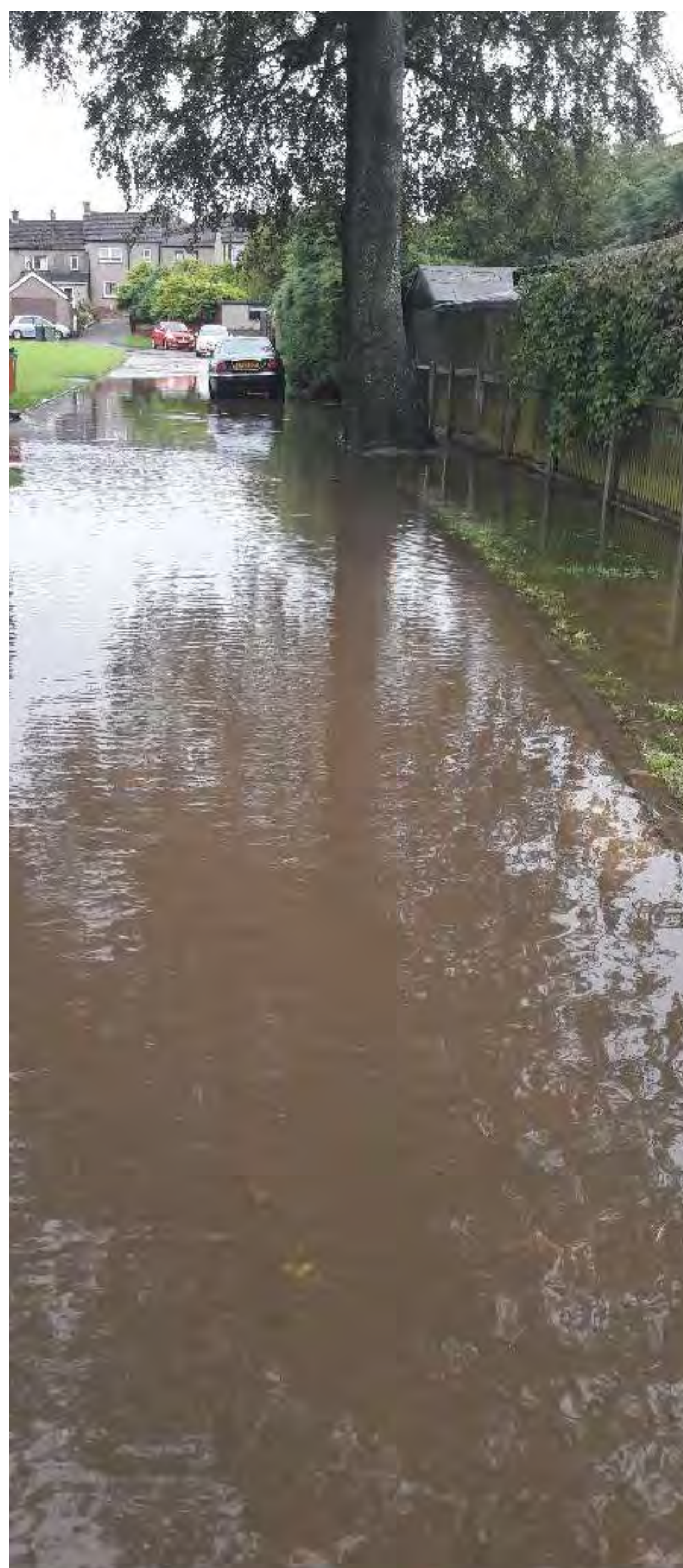


**Scottish
Water**

Trusted to serve Scotland

Why is investment needed?

Previous flooding has occurred in the community





**Scottish
Water**

Trusted to serve Scotland

What is planned?

We will redirect the storm flows from sewers that are overloaded to a new underground tank in Newington Park. This tank will store the waters during storms to help prevent flooding.

Once the storm has subsided, the storm water is then pumped back into the sewer network when it is safe to do so.

The solution has been designed using evidence from previous heavy rainfall events and using a computer model on the existing sewer network. The park was identified as the most suitable location to accommodate the large underground tank. New sewer pipework is also needed in neighbouring streets.

This project is a £5m investment in the waste water infrastructure to help prevent sewer flooding in Annan. The work is being carried out by our alliance partner amey Black & Veatch (aBV).



Scottish
Water

Trusted to serve Scotland

Overview of proposals



Key

 = Open cut new pipes shown in Red

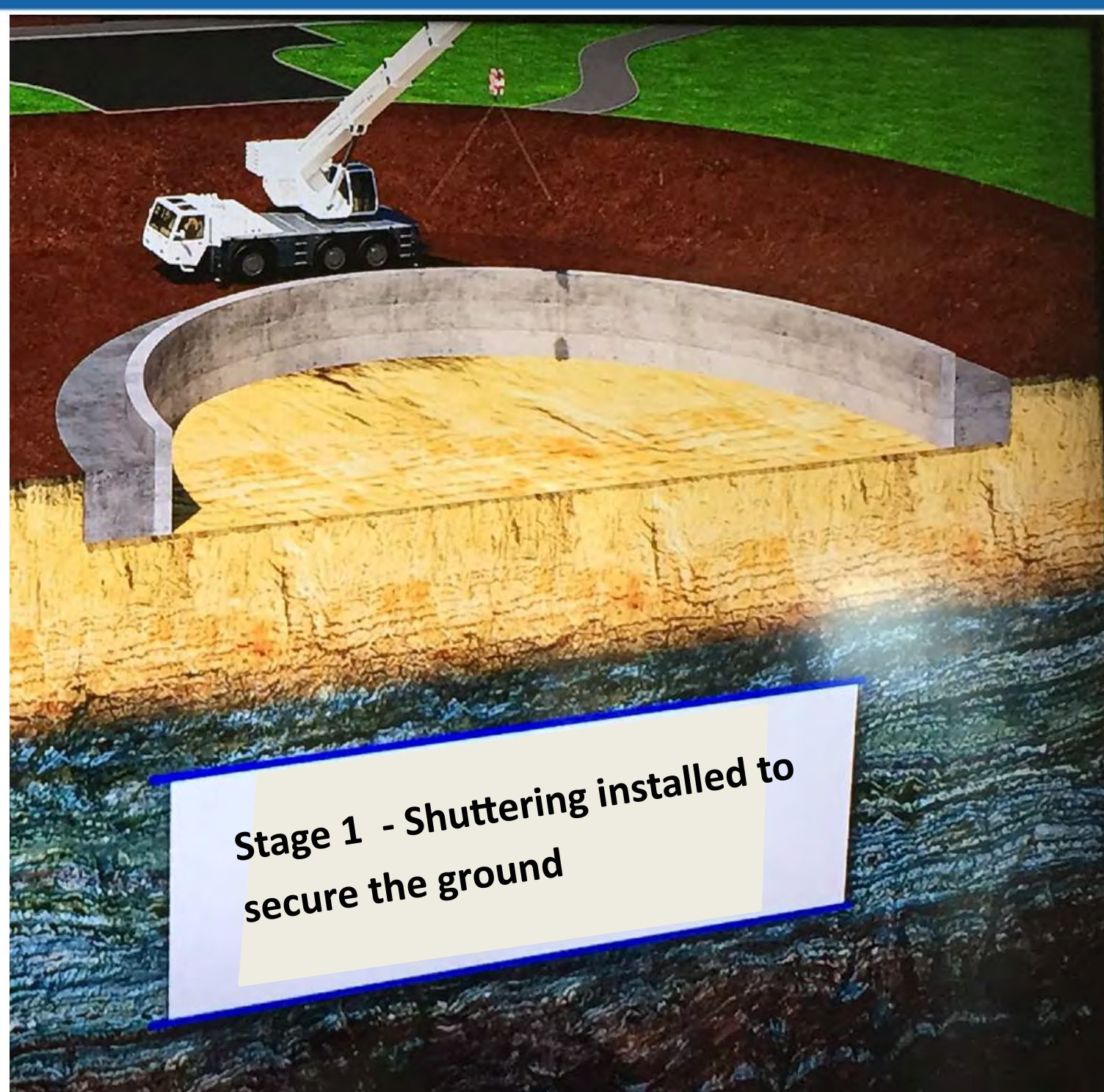
The above plan shows the route of the new sewers and location of shaft tank, kiosk and work access point.



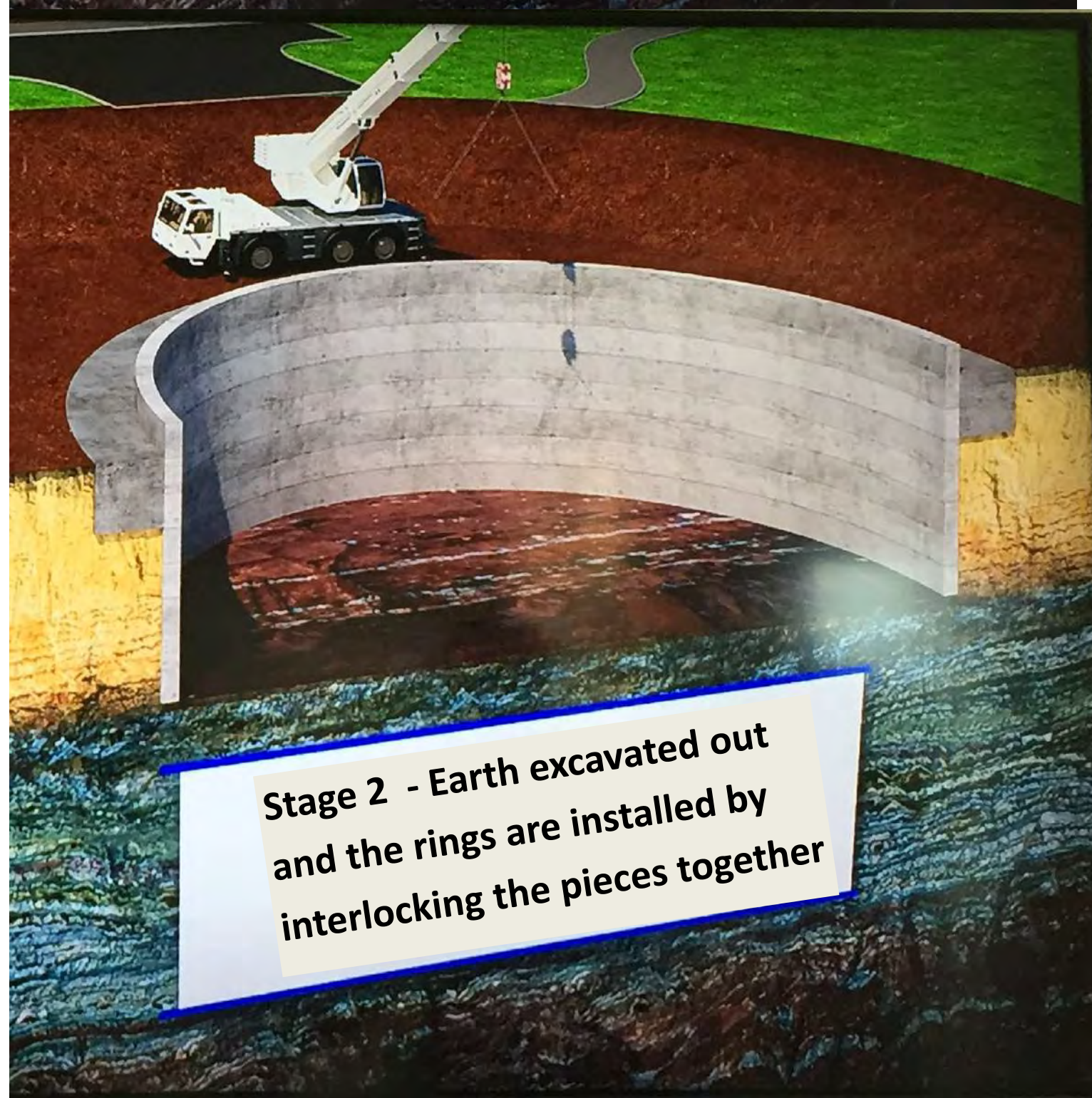
**Scottish
Water**

Trusted to serve Scotland

Newington Park Storm Tank



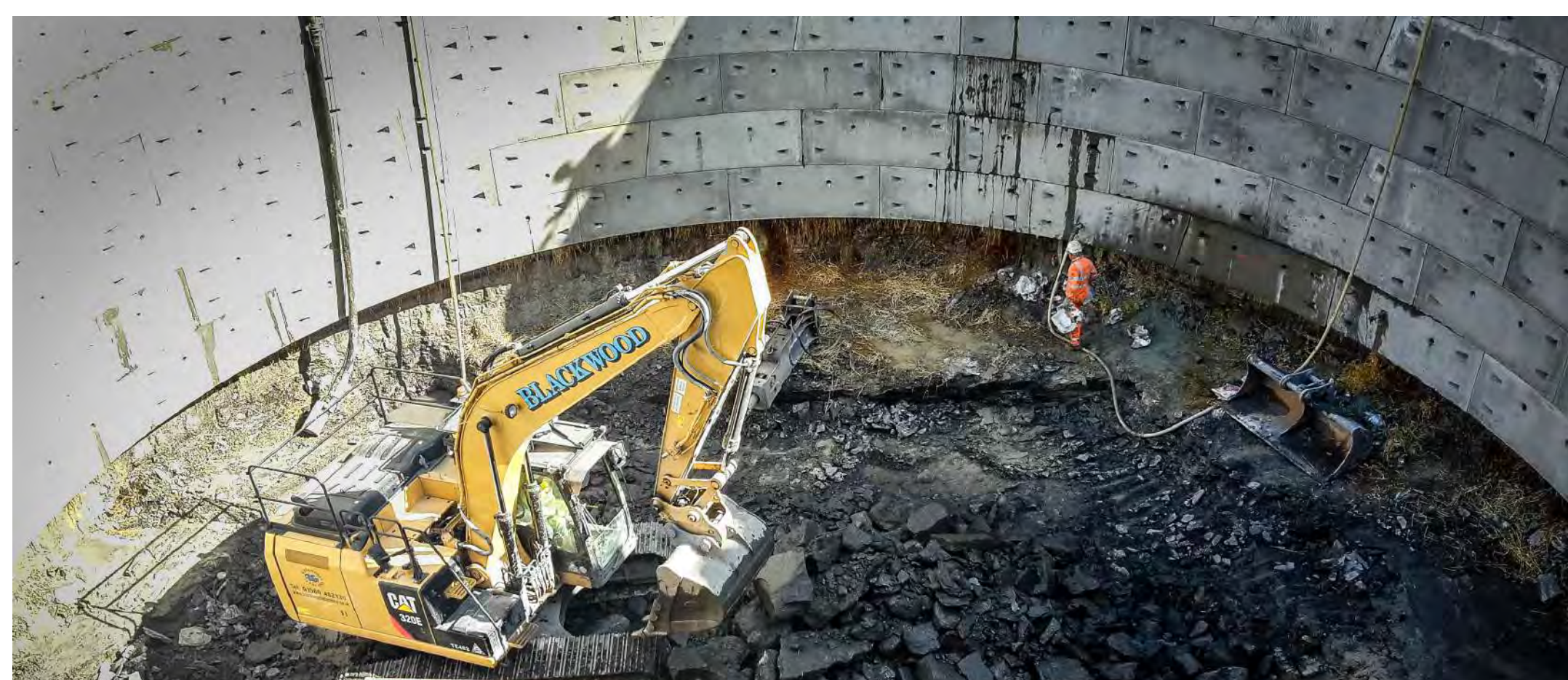
Stage 1 - Shuttering installed to secure the ground



Stage 2 - Earth excavated out and the rings are installed by interlocking the pieces together



Stage 3
Ring installation

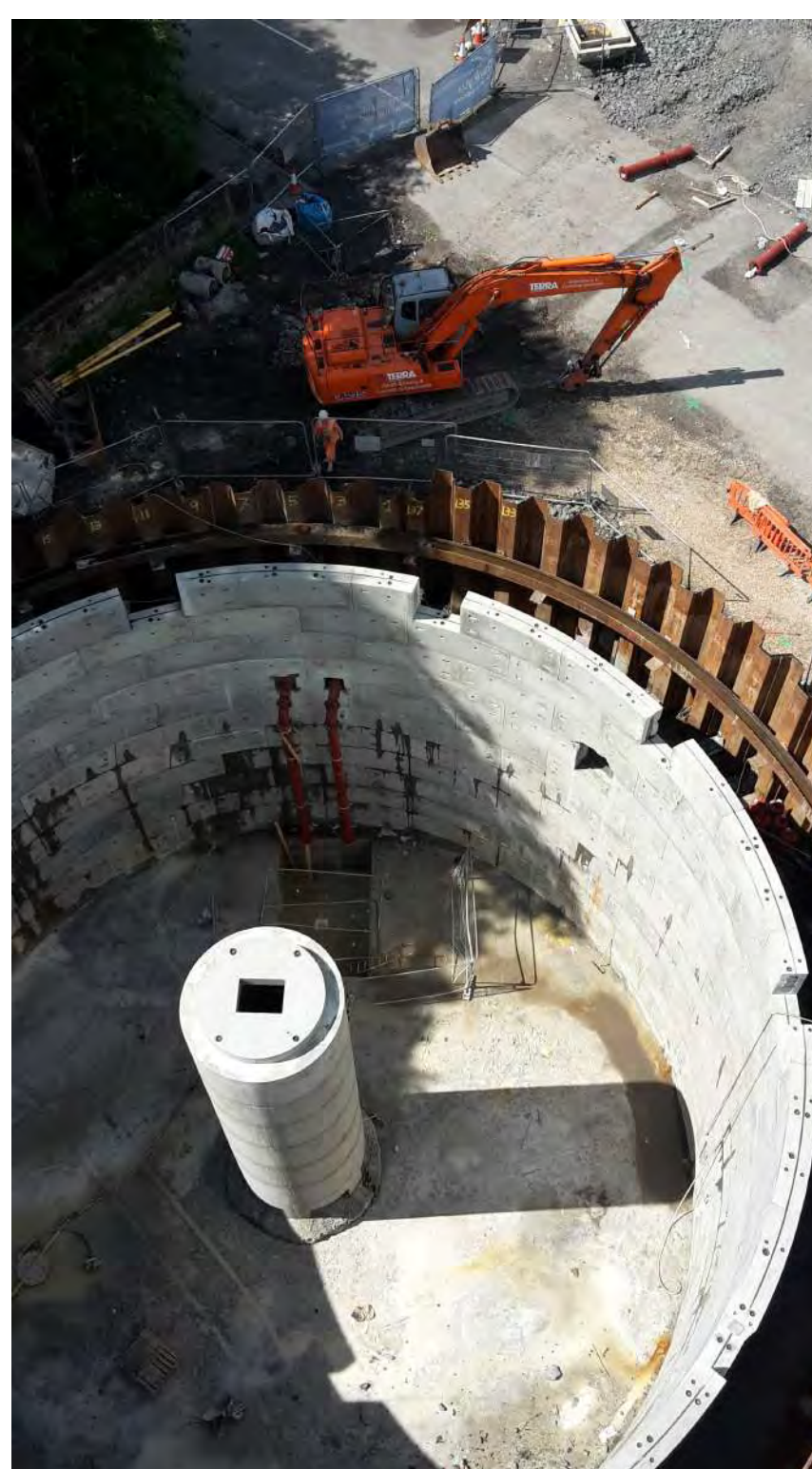
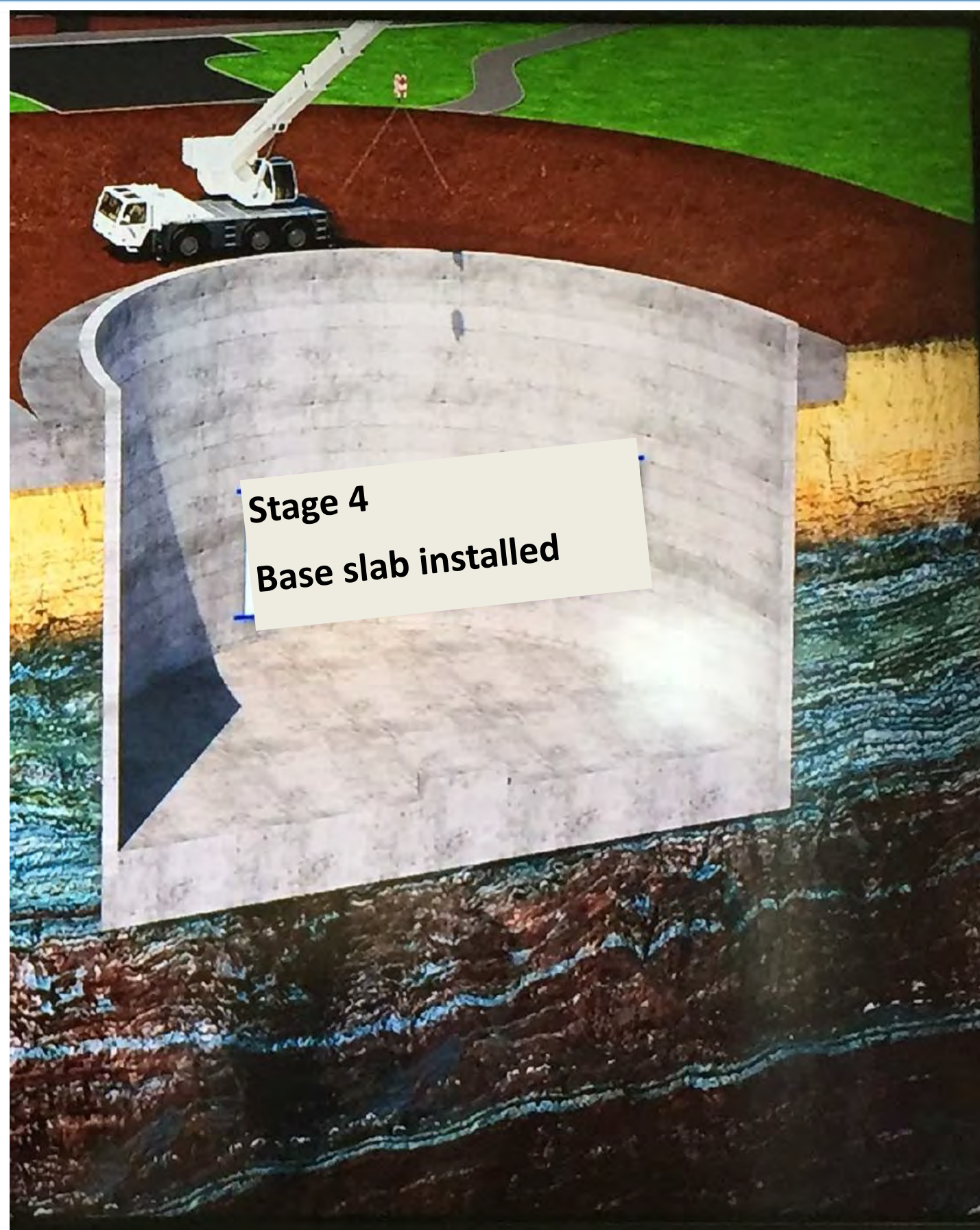




**Scottish
Water**

Trusted to serve Scotland

Newington Park Storm Tank

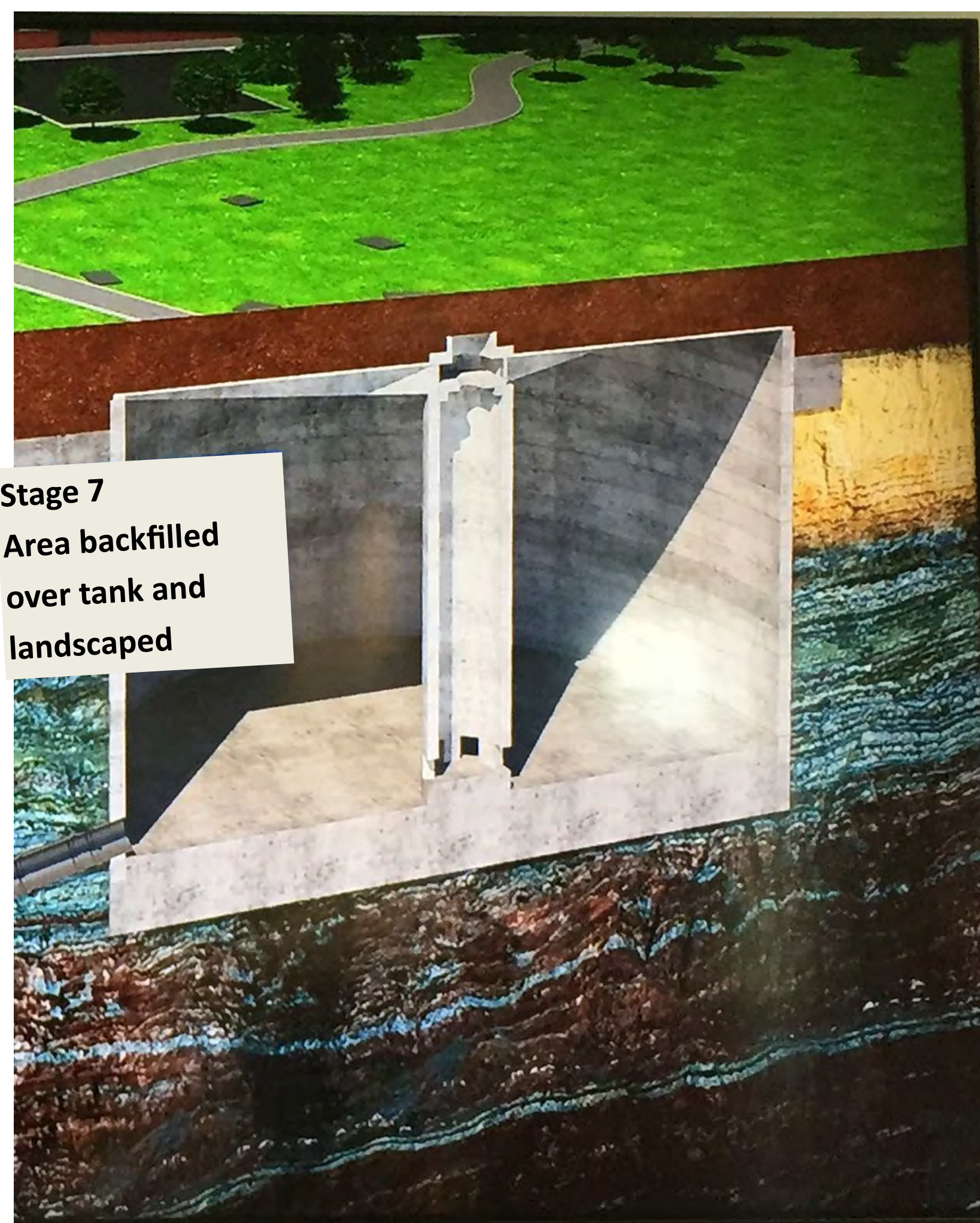




**Scottish
Water**

Trusted to serve Scotland

Newington Park Storm Tank



Stage 7

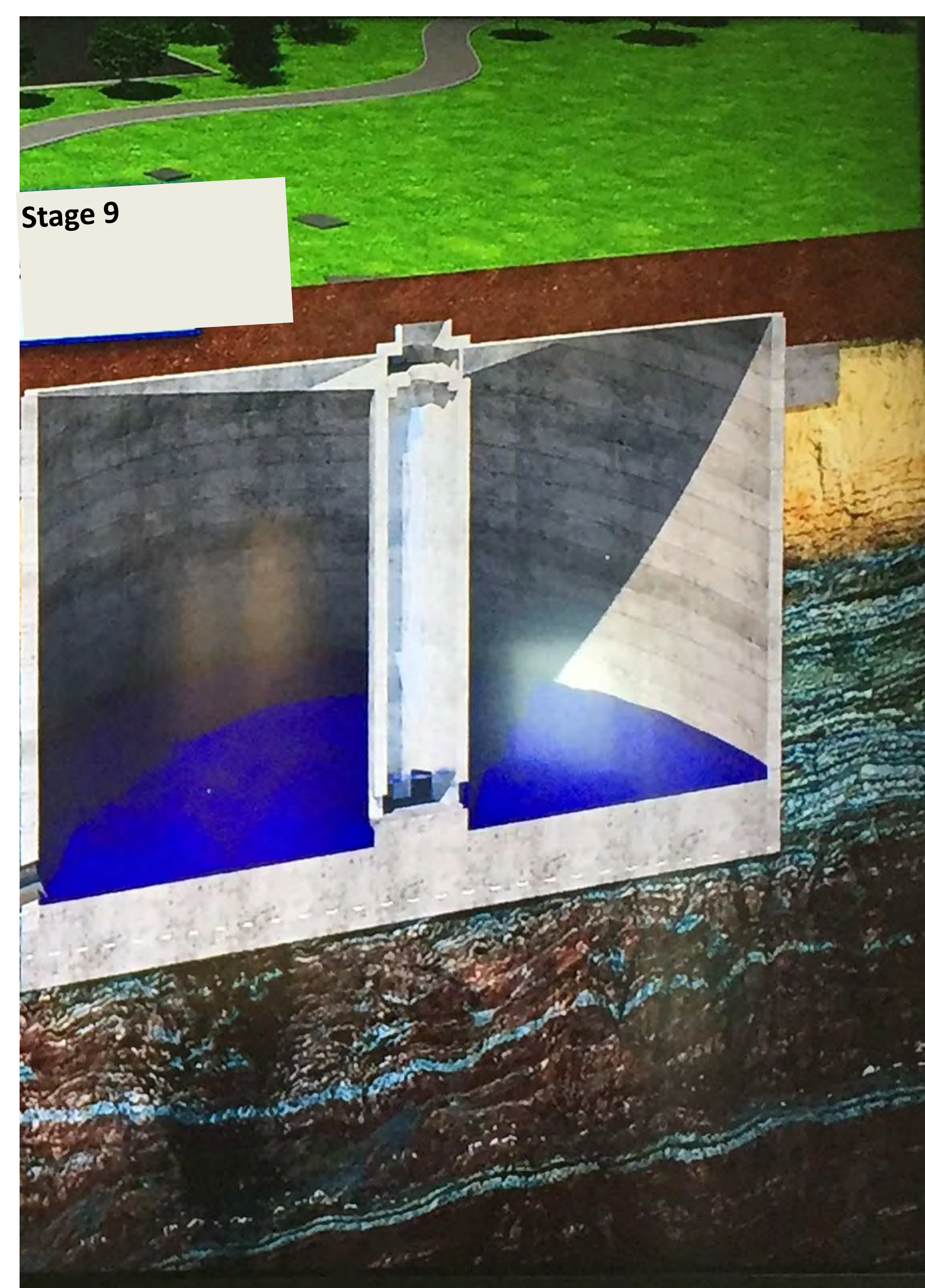
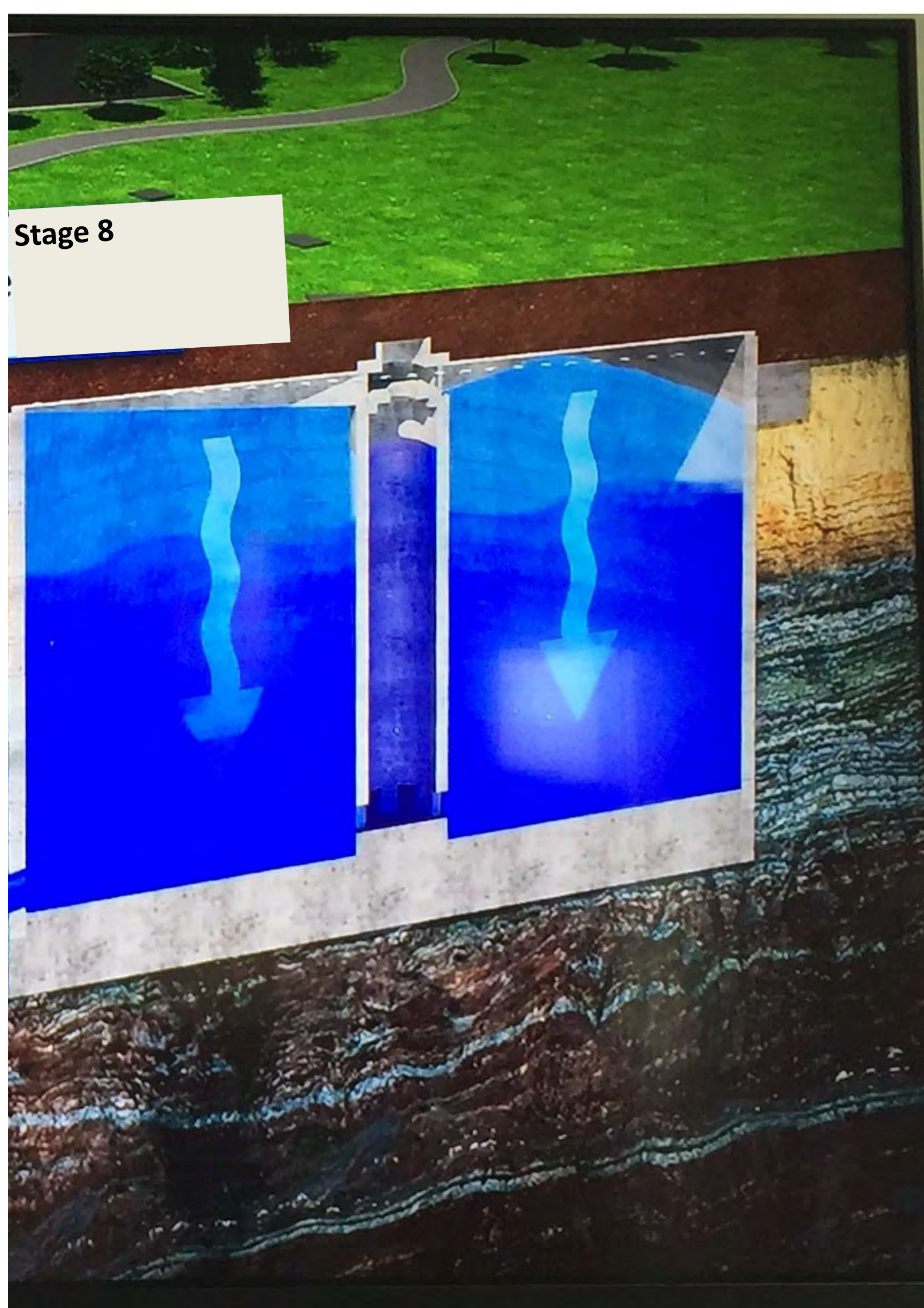
Area backfilled over the tank and the area is landscaped.

Stage 8

Storm waters are directed to the tank via the new pipework. The tank fills up during the storms. (The middle column of water is used to flush out the tank after a storm).

Stage 9

The storm waters are pumped back into the sewer network after the storm has subsided when it is safe to do so freeing up capacity for any future storm events.



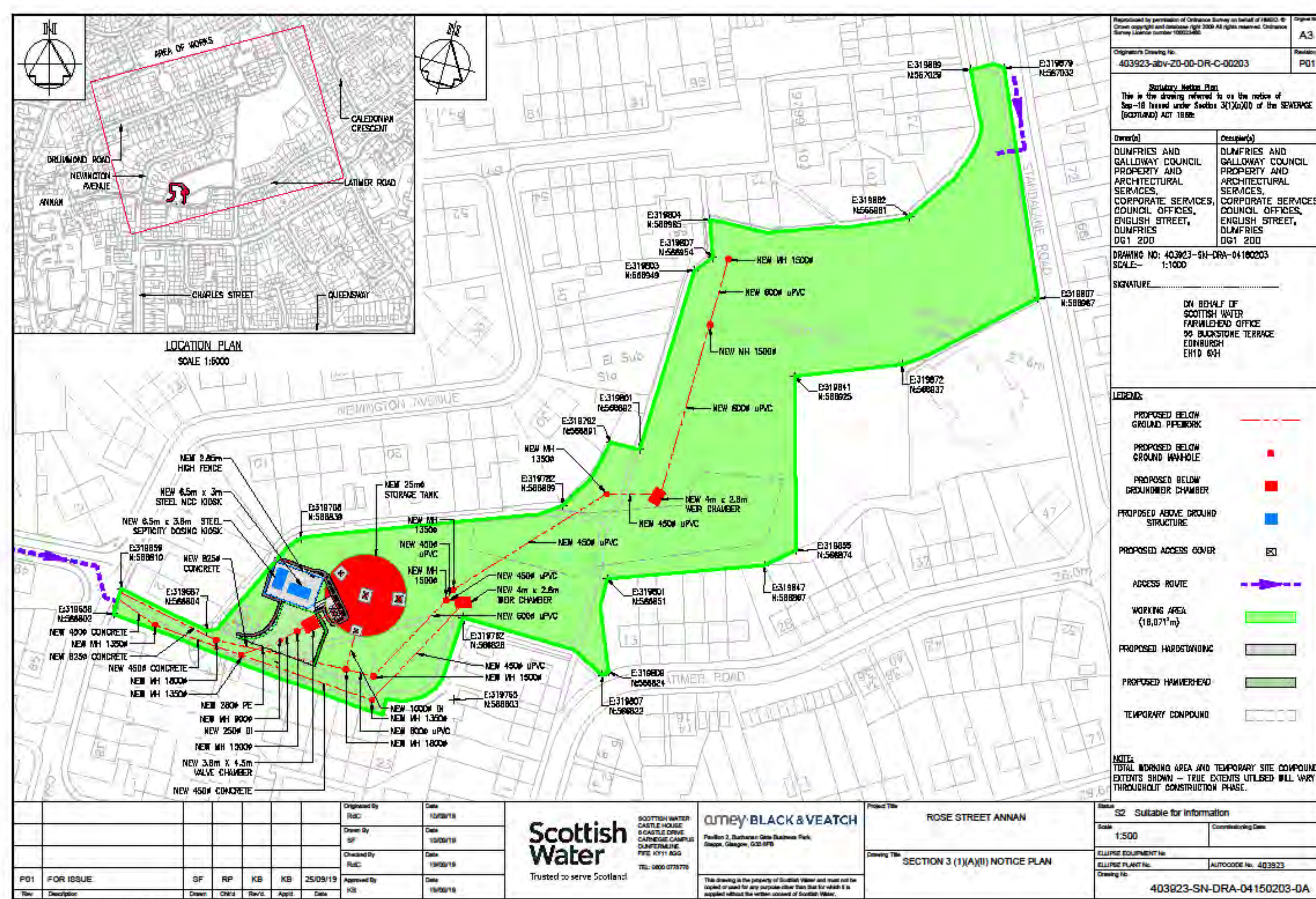


Scottish Water

Trusted to serve Scotland

Area of Park to be closed off

- The majority of the park will be closed off for approx. 14 months during the construction works. We shall maintain walkway access around the edge of the park. The football pitch shall remain open.

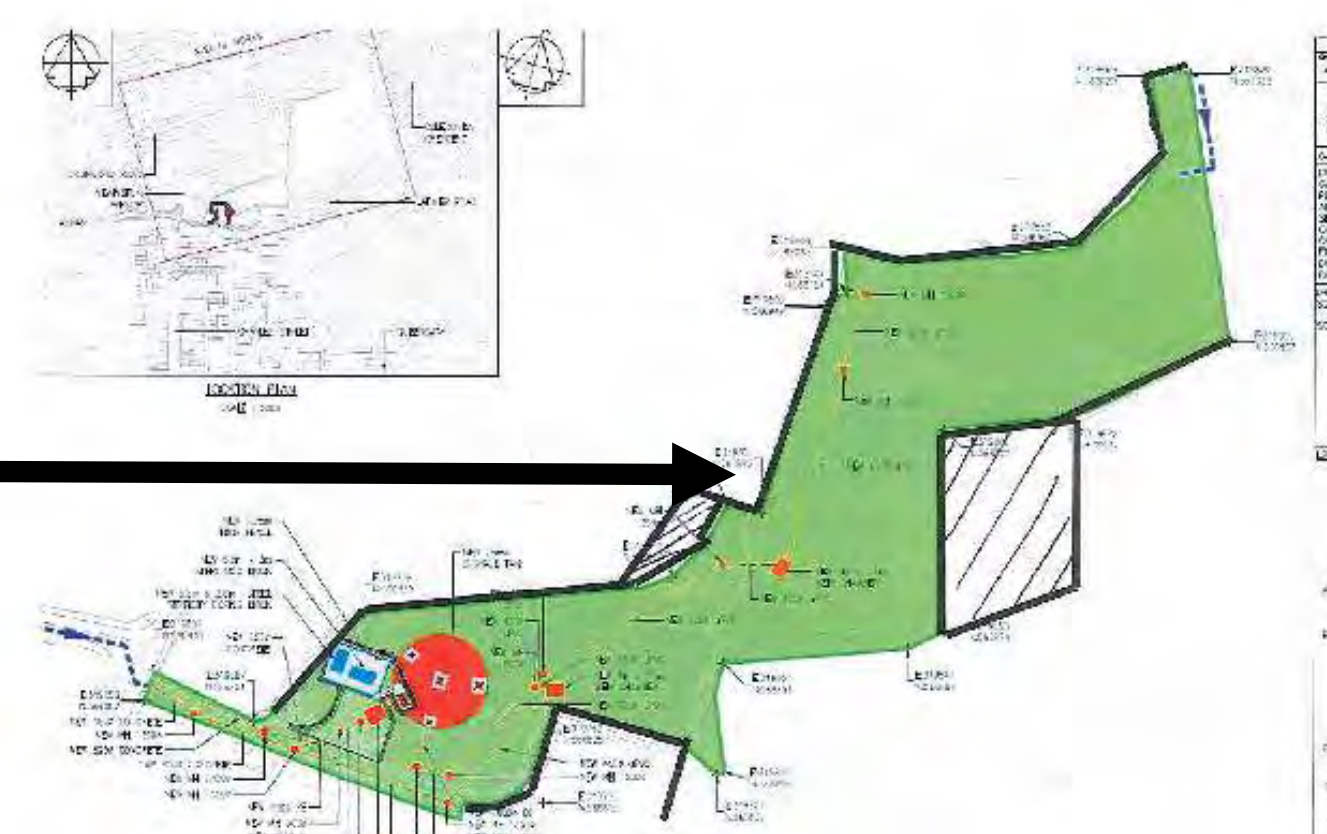


Key

= new sewer pipes shown in Red

= area of park to be closed off during construction.

The black lines around the park show the walkways that are proposed to remain open





**Scottish
Water**

Trusted to serve Scotland

Temp works access road

- **We require to install a temporary access road into the park to bring in the works vehicles during the construction phase.**



- **The swings and play equipment will be replaced with brand new equipment and located at a new location in the park.**

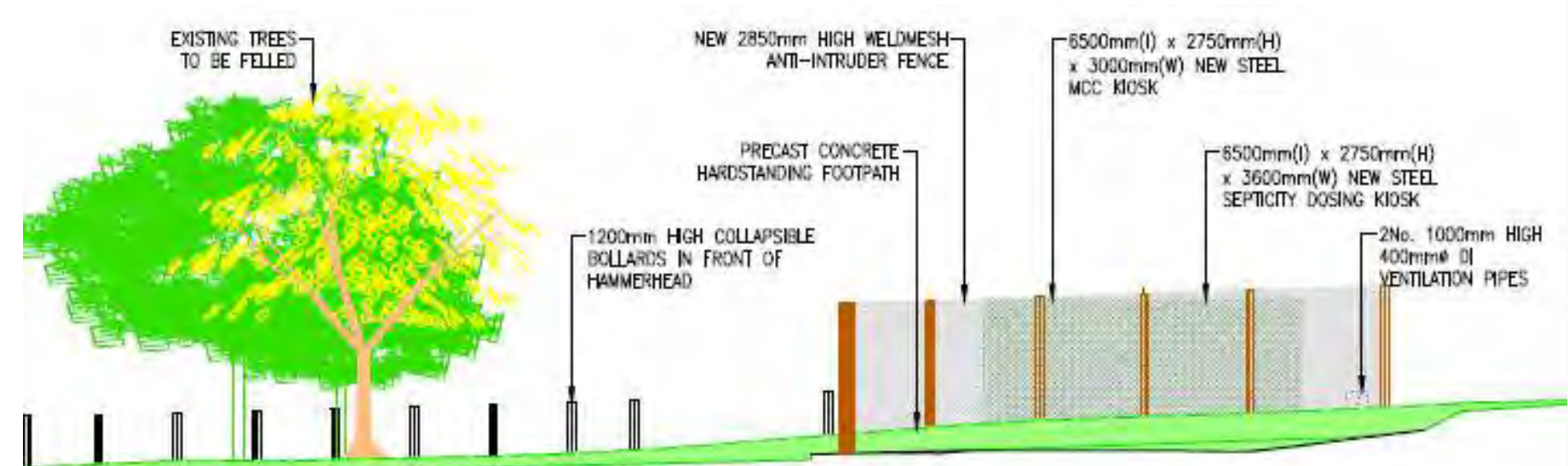
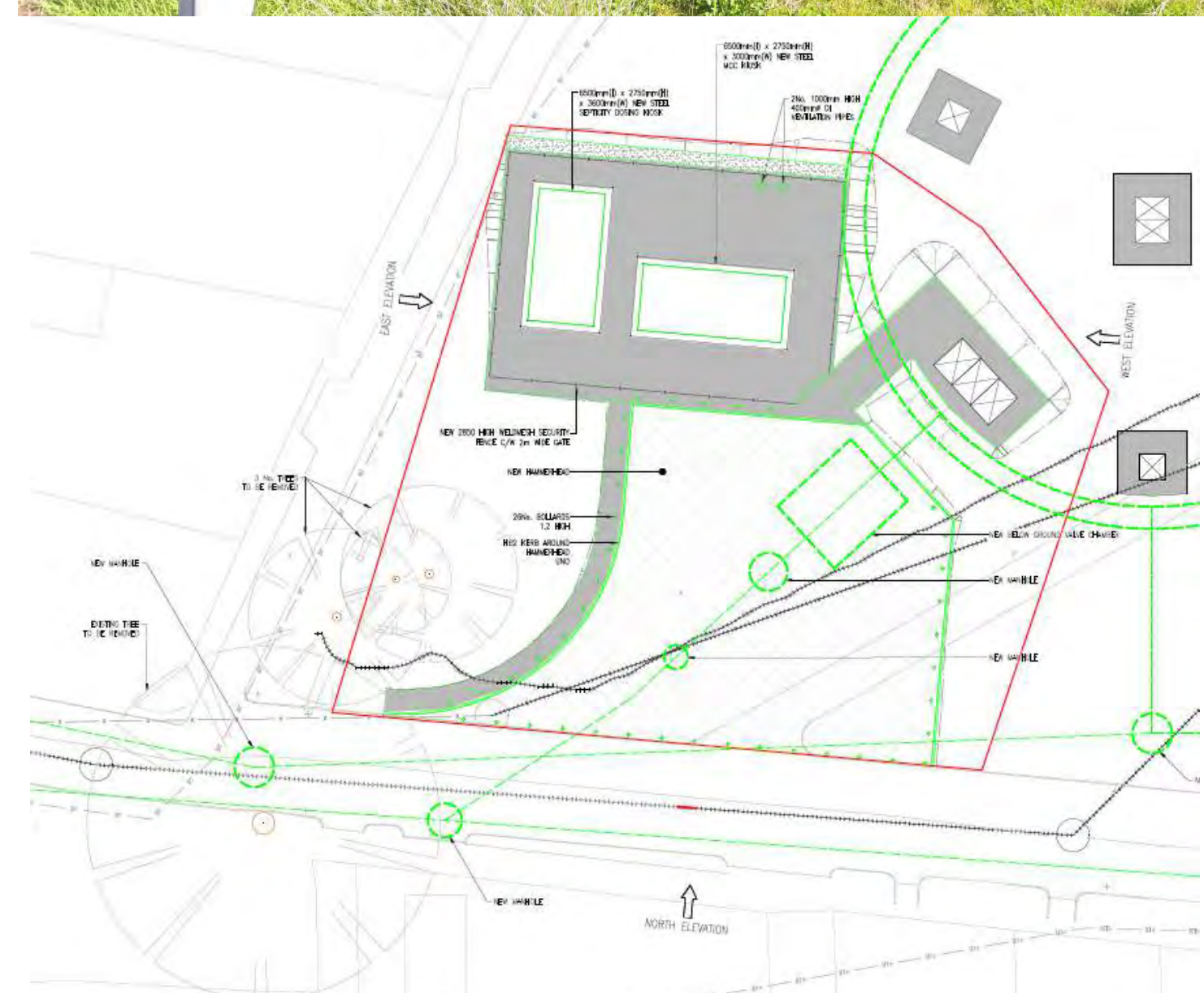


Scottish Water

Trusted to serve Scotland

What will the park look once complete?

- The park swings will be replaced with new equipment at a new location in the park.
- The road, park and grass will be reinstated.
- The new sewer infrastructure will be located underground. There is however a requirement for two large green kiosks to house controls which is required to be located above ground in grassed areas. A 2.3m security fence around the kiosks is required.
- An access track for maintenance vehicles is required to the new infrastructure.
- New manhole covers and chamber access covers with concrete surround will be visible at ground level.
- We require to remove 4 trees to make space for the new sewer infrastructure.





**Scottish
Water**

Trusted to serve Scotland

When will the project be completed?

The work in the Park is expected to start early 2020 and be completed by Summer 2021.

What happens next?

The project will be able to help reduce the impact of flooding and provide protection to a 1:10 year storm event.

How to keep up to date about the project.

We shall write to the local community 2 weeks prior to the start date way traffic lights set up and issue a press release.

Please also visit : -

www.scottishwater.co.uk/annan



**Scottish
Water**

Trusted to serve Scotland

Park / Rose Street

New sewers to be laid on : -

- **Rose Street to the existing sewer at the junction with Drummond Road. (work to take approx. 3 months)**



Key

 = Open cut new pipes shown in Red

- **Greenlea Road (from the Junction with Charles St to Douglas Gardens) [work to take approx. 3 months].**



- Road Closure to vehicular traffic required to do the works
- Full pedestrian access will be maintained at all times.
- You may notice some noise and vibration from the works.
- There will be an increase of work vehicles traffic and machinery in the area during the works.



**Scottish
Water**

Trusted to serve Scotland

Keeping in touch

Scottish Water and aBV are committed to keeping you and the local community fully informed and engaged with the work we are doing.

We hope today's event has given you an understanding of our work and an opportunity to discuss any questions or concerns.

Scottish Water is a publicly owned company, accountable to the Scottish Parliament and the people of Scotland. We operate within a strict policy and regulatory framework, but we are making this investment for our current and future customers in this area. We are keen to work with you to minimise any short term disruption this involves.

Volunteering programme



Every Scottish Water employee can take up to 2 days a year to get involved in education, conservation or community activities.

Get in touch if there are volunteering opportunities locally that you think could benefit from our support.

We would be pleased to receive your feedback on today's event. You can keep in touch at any time using these details:

Website: www.scottishwater.co.uk/annan

Email: help@scottishwater.co.uk*

Call: 0800 0778 778*

*Ref: Capital/403923/aBV