

LOCATION	DWF (l/s)	3DWF (l/s)	M1 (l/s)	M5 (l/s)	M10 (l/s)	M30 (l/s)
MH01	0.27	0.40	27	25	28	28
MH02	0.12	0.17	11	35	37	37
MH05	0.28	0.40	41	43.5	43.5	44
MH06	0.64	0.95	74	106	107	109
MH11	1.71	2.51	75	76	78	78

Reproduced by permission of Ordnance Survey on behalf of HMSO. © Crown copyright and database right 2009. All rights reserved. Ordnance Survey Licence number 100023460

Original Size
A1

502892-ABI-Z0-00-DR-C-01102
Revision
P02

- NOTES:
- ALL DIMENSIONS IN METRES AND ALL LEVELS IN METRES AOD, UNLESS NOTED OTHERWISE.
 - ALL DIMENSIONS AND LEVELS TO BE CONFIRMED BY THE CONTRACTOR.
 - ALL UNIDENTIFIED SERVICES TO BE ASSUMED LIVE UNTIL DETERMINED OTHERWISE. MEASURES TO ENSURE ALL HAZARDS ARE REMOVED BEFORE CONTINUING WITH EXCAVATION SHALL BE TAKEN.
 - CONTRACTOR TO CONFIRM LINE AND LEVEL OF SERVICES PRIOR TO CARRYING OUT ANY EXCAVATION WORKS. ALIGNMENT INDICATED ON SERVICE DRAWINGS MAY VARY FROM THOSE FOUND ON SITE.
 - ALL WORKS TO BE CARRIED OUT IN ACCORDANCE WITH THE CIVIL ENGINEERING SPECIFICATION FOR THE WATER INDUSTRY 7TH EDITION WITH AMENDMENTS OF SCOTTISH WATER SPECIFICATION 502.
 - REINSTATEMENT OF GROUND TO MATCH EXISTING PROFILE AND CONDITIONS. BACKFILL REINSTATEMENT TO COMPLY WITH LOCAL AUTHORITY HIGHWAY SPECIFICATION. SEE SW STD. DWG. 5XXXXXXX-SN-DRA-04000702 FOR TYPICAL FLEXIBLE ROAD MAKE-UP DETAILS.

- LEGEND:
- NEW COMBINED SEWER
 - NEW COMBINED SEWER (RISING MAIN)
 - TEMPORARY WORKS AREA
 - NEW DN150 DUCT
 - NEW DRAWPOINT CHAMBER

- EXISTING SERVICES LEGEND:
- SEWER - COMBINED
 - WATER MAIN - POTABLE
 - GAS MAIN - LOW PRESSURE
 - GAS MAIN - MEDIUM PRESSURE
 - ELECTRIC - PILOT CABLE (TELEMETRY)
 - ELECTRIC - HIGH VOLTAGE
 - ELECTRIC - LOW VOLTAGE
 - ELECTRIC - OUT OF USE
 - ELECTRIC - STREET LIGHTING
 - VIRGIN MEDIA
 - BT

REFERENCES:
5000981573-SN-DRA-04201103 NEW SITE LAYOUT PLAN SHEET 2 OF 2

FOR PREVIOUS VERSIONS OF THIS FILE SEE
502892-BVL-Z0-00-DR-C-01102

P01	FOR INFORMATION	SH	AJH	MM	MM	04/02/21
P02	FOR CONSTRUCTION	SH	OW	AT	AT	09/09/21

Rev	Description	Drawn	Chk'd	Rev'd	App'd	Date

Scottish Water
Trusted to serve Scotland

SCOTTISH WATER
CASTLE HOUSE
6 CASTLE DRIVE
CARNEGIE CAMPUS
DUNFERMLINE
FIFE KY11 8GG
TEL: 0800 0778778

amey·binnies
Pavilion 2, Buchanan Gate Business Park, Stepps, Glasgow, G33 6FB

Originated By	Checked By	Approved By
AH	SH	AH
Date	Date	Date
28.02.20	28.02.20	04.02.21
Date	Date	Date
04.02.21	04.02.21	04.02.21

Project Title
BRAIDHOLM ROAD

Drawing Title
NEW SITE LAYOUT SHEET 1 OF 2

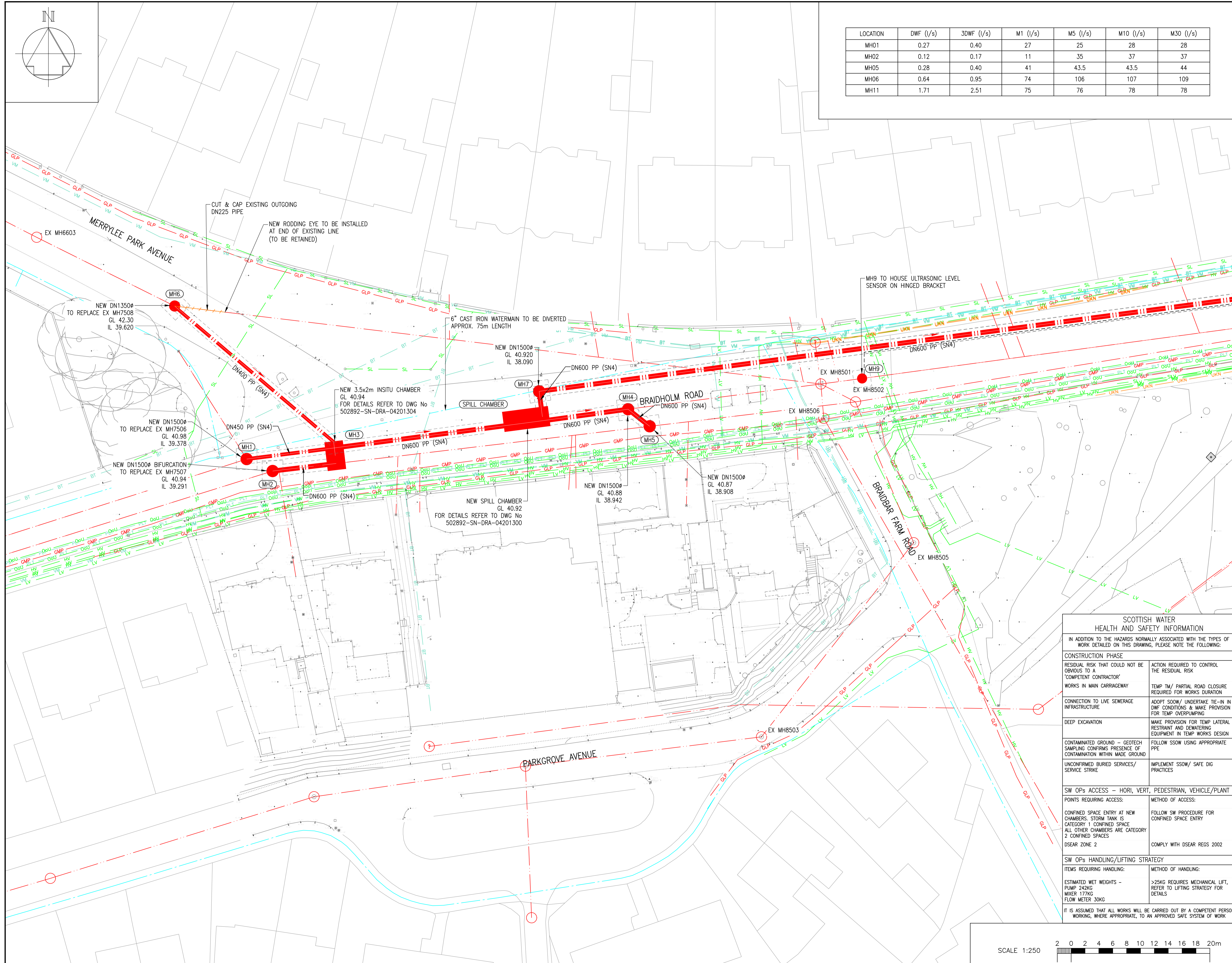
ELLIPSE EQUIPMENT No. 5000981573
ELLIPSE PLANT No. AUTOCODE No. 502892
Drawing No. 5000981573-SN-DRA-04201102-01

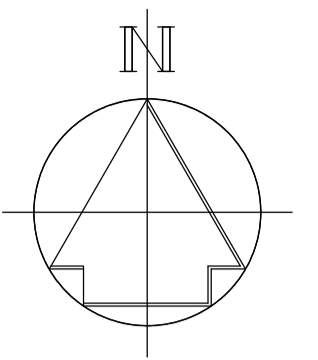
SCOTTISH WATER HEALTH AND SAFETY INFORMATION

IN ADDITION TO THE HAZARDS NORMALLY ASSOCIATED WITH THE TYPES OF WORK DETAILED ON THIS DRAWING, PLEASE NOTE THE FOLLOWING:

CONSTRUCTION PHASE	RESIDUAL RISK THAT COULD NOT BE OBVIOUS TO A 'COMPETENT CONTRACTOR'	ACTION REQUIRED TO CONTROL THE RESIDUAL RISK
WORKS IN MAIN CARRIAGEWAY		TEMP TM / PARTIAL ROAD CLOSURE REQUIRED FOR WORKS DURATION
CONNECTION TO LIVE SEWERAGE		ADOPT SSOW / UNDERTAKE TIE-IN IN DWF CONDITIONS & MAKE PROVISION FOR TEMP OVERPUMPING
DEEP EXCAVATION		MAKE PROVISION FOR TEMP LATERAL RESTRAINT AND Dewatering EQUIPMENT IN TEMP WORKS DESIGN
CONTAMINATED GROUND - GEOTECH SAMPLING CONFIRMS PRESENCE OF CONTAMINATION WITHIN MADE GROUND		FOLLOW SSOW USING APPROPRIATE PPE
UNCONFIRMED BURIED SERVICES/ SERVICE STRIKE		IMPLEMENT SSOW / SAFE DIG PRACTICES
SW OPs ACCESS - HORI, VERT, PEDESTRIAN, VEHICLE/PLANT POINTS REQUIRING ACCESS:		METHOD OF ACCESS:
CONFINED SPACE ENTRY AT NEW CHAMBERS. STORM TANK IS CATEGORY 1 CONFINED SPACE ALL OTHER CHAMBERS ARE CATEGORY 2 CONFINED SPACES		FOLLOW SW PROCEDURE FOR CONFINED SPACE ENTRY
DSEAR ZONE 2		COMPLY WITH DSEAR REGS 2002
SW OPs HANDLING/LIFTING STRATEGY		METHOD OF HANDLING:
ITEMS REQUIRING HANDLING:		>25KG REQUIRES MECHANICAL LIFT, REFER TO LIFTING STRATEGY FOR DETAILS
ESTIMATED WET WEIGHTS - PUMP 242KG MIXER 177KG FLOW METER 30KG		
IT IS ASSUMED THAT ALL WORKS WILL BE CARRIED OUT BY A COMPETENT PERSON WORKING, WHERE APPROPRIATE, TO AN APPROVED SAFE SYSTEM OF WORK		

SCALE 1:250
0 2 4 6 8 10 12 14 16 18 20m





LOCATION	DWF (l/s)	3DWF (l/s)	M1 (l/s)	M5 (l/s)	M10 (l/s)	M30 (l/s)
MH01	0.27	0.40	27	25	28	28
MH02	0.12	0.17	11	35	37	37
MH05	0.28	0.40	41	43.5	43.5	44
MH06	0.64	0.95	74	106	107	109
MH11	1.71	2.51	75	76	78	78

Reproduced by permission of Ordnance Survey on behalf of HMSO. © Crown copyright and database right 2009. All rights reserved. Ordnance Survey Licence number 100023460

Originator's Drawing No. 502892-ABI-Z0-00-DR-C-01103

Original Size A1

Revision P02

- NOTES:
- ALL DIMENSIONS IN METRES AND ALL LEVELS IN METRES AOD, UNLESS NOTED OTHERWISE.
 - ALL DIMENSIONS AND LEVELS TO BE CONFIRMED BY THE CONTRACTOR.
 - ALL UNIDENTIFIED SERVICES TO BE ASSUMED LIVE UNTIL DETERMINED OTHERWISE. MEASURES TO ENSURE ALL HAZARDS ARE REMOVED BEFORE CONTINUING WITH EXCAVATION SHALL BE TAKEN.
 - CONTRACTOR TO CONFIRM LINE AND LEVEL OF SERVICES PRIOR TO CARRYING OUT ANY EXCAVATION WORKS. ALIGNMENT INDICATED ON SERVICE DRAWINGS MAY VARY FROM THOSE FOUND ON SITE.
 - ALL WORKS TO BE CARRIED OUT IN ACCORDANCE WITH THE CIVIL ENGINEERING SPECIFICATION FOR THE WATER INDUSTRY 7TH EDITION WITH AMENDMENTS OF SCOTTISH WATER SPECIFICATION 502.
 - REINSTATEMENT OF GROUND TO MATCH EXISTING PROFILE AND CONDITIONS. BACKFILL REINSTATEMENT TO COMPLY WITH LOCAL AUTHORITY HIGHWAY SPECIFICATION. SEE SW STD. DWG. 5XXXXXXX-SN-DR-04000702 FOR TYPICAL FLEXIBLE ROAD MAKE-UP DETAILS.
 - DRAW PITS LOCATED IN CARRIAGEWAY SHOULD BE OF BRICK CONSTRUCTION WITH D400 COVER AS PER SW STANDARD DETAIL 5XXXXXXX-CO-DR-04007701. DRAW PITS OFF THE CARRIAGEWAY CAN BE OF PLASTIC CONSTRUCTION WITH B125 COVER, AS PER SW STANDARD DETAIL 5XXXXXXX-CO-DR-04007704.

HOLD SCHEDULE			
HOLD No.	ACTION ON	DATE	DESCRIPTION
1	oBV	04:02:21	TRENCHLESS TECHNOLOGY TO BE CONFIRMED BY DELIVERY TEAM & TEMPORARY WORKS DESIGN PRIOR TO CONSTRUCTION - TRENCHLESS PIPE MATERIAL TBC AGAINST PREFERRED TRENCHLESS TECHNOLOGY

- LEGEND:
- NEW COMBINED SEWER
 - NEW COMBINED SEWER (RISING MAIN)
 - TEMPORARY WORKS AREA
 - NEW DN150 FLEXIBLE DUCT
 - NEW DRAWPIT CHAMBER

- EXISTING SERVICES LEGEND:
- SEWER - COMBINED
 - WATER MAIN - POTABLE
 - GAS MAIN - LOW PRESSURE
 - GAS MAIN - MEDIUM PRESSURE
 - ELECTRIC - PILOT CABLE (TELEMETRY)
 - ELECTRIC - HIGH VOLTAGE
 - ELECTRIC - LOW VOLTAGE
 - ELECTRIC - OUT OF USE
 - ELECTRIC - STREET LIGHTING
 - VM - VIRGIN MEDIA
 - BT

- REFERENCES:
- 5000981573-SN-DR-04201102 NEW SITE LAYOUT PLAN SHEET 1 OF 2
 - 5000981573-SN-DR-04201301 NEW STORAGE TANK PLAN
 - 5000981573-SN-DR-04201302 NEW STORAGE TANK COVER PLAN
 - 5000981573-SN-DR-04201303 NEW STORAGE TANK SECTION
 - 5000981573-SN-DR-04201105 NEW MCC KIOSK
 - 5XXXXXXX-CO-DR-04007701 STANDARD DETAILS CABLE DRAWPIT DETAILS
 - 5XXXXXXX-CO-DR-04007704 STANDARD DETAILS PLASTIC CABLE DRAWPIT
 - 5XXXXXXX-CO-DR-04007204 STANDARD DETAILS TYPICAL FOOTPATH DETAIL
 - 5390.001 BRAIDHOLM ROAD - PLANTING REINSTATEMENT PLAN

FOR PREVIOUS VERSIONS OF THIS FILE SEE 502892-BVL-Z0-00-DR-C-01103

Rev	Description	Drawn	Chk'd	Rev'd	App'd	Date
P01	FOR INFORMATION	SH	AJH	MM	MM	04/02/21
P02	FOR CONSTRUCTION	SH	OW	AT	AT	09/09/21

SCOTTISH WATER HEALTH AND SAFETY INFORMATION

IN ADDITION TO THE HAZARDS NORMALLY ASSOCIATED WITH THE TYPES OF WORK DETAILED ON THIS DRAWING, PLEASE NOTE THE FOLLOWING:

CONSTRUCTION PHASE	RESIDUAL RISK THAT COULD NOT BE OBVIOUS TO A 'COMPETENT CONTRACTOR'	ACTION REQUIRED TO CONTROL THE RESIDUAL RISK
WORKS IN MAIN CARRIAGEWAY	TEMP TM/ PARTIAL ROAD CLOSURE REQUIRED FOR WORKS DURATION	ADOPT S208/ UNDERTAKE TIE-IN IN DWF CONDITIONS & MAKE PROVISION FOR TEMP OVERPUMPING
CONNECTION TO LIVE SEWERAGE INFRASTRUCTURE	ADOPT S208/ UNDERTAKE TIE-IN IN DWF CONDITIONS & MAKE PROVISION FOR TEMP OVERPUMPING	MAKE PROVISION FOR TEMP LATERAL RESTRAINT AND Dewatering EQUIPMENT IN TEMP WORKS DESIGN
DEEP EXCAVATION	MAKE PROVISION FOR TEMP LATERAL RESTRAINT AND Dewatering EQUIPMENT IN TEMP WORKS DESIGN	FOLLOW S208 USING APPROPRIATE PPE
CONTAMINATED GROUND - GEOTECH SAMPLING CONFIRMS PRESENCE OF CONTAMINATION WITHIN MADE GROUND	FOLLOW S208 USING APPROPRIATE PPE	IMPLEMENT S208/ SAFE DIG PRACTICES
UNCONFIRMED BURIED SERVICES/ SERVICE STRIKE	IMPLEMENT S208/ SAFE DIG PRACTICES	

SW OPs ACCESS - HORI, VERT, PEDESTRIAN, VEHICLE/PLANT

POINTS REQUIRING ACCESS:	METHOD OF ACCESS:
CONFINED SPACE ENTRY AT NEW CHAMBERS. STORM TANK IS CATEGORY 1 CONFINED SPACE ALL OTHER CHAMBERS ARE CATEGORY 2 CONFINED SPACES	FOLLOW SW PROCEDURE FOR CONFINED SPACE ENTRY
DSEAR ZONE 2	COMPLY WITH DSEAR REGS 2002

SW OPs HANDLING/LIFTING STRATEGY	METHOD OF HANDLING:
ITEMS REQUIRING HANDLING:	
ESTIMATED WET WEIGHTS - PUMP 242KG MIXER 177KG FLOW METER 30KG	>25KG REQUIRES MECHANICAL LIFT, REFER TO LIFTING STRATEGY FOR DETAILS

IT IS ASSUMED THAT ALL WORKS WILL BE CARRIED OUT BY A COMPETENT PERSON WORKING, WHERE APPROPRIATE, TO AN APPROVED SAFE SYSTEM OF WORK.



Pavilion 2, Buchanan Gate Business Park, Stepps, Glasgow, G33 6FB

Originated By	Drawn By	Checked By	Approved By
AH	SH	AH	MM

Date	Date	Date	Date
28.02.20	28.02.20	04.02.21	04.02.21

Scale: 1:250

Status: S4 Suitable for construction approval

Commissioning Date

Project Title: BRAIDHOLM ROAD

Drawing Title: NEW SITE LAYOUT SHEET 2 OF 2

ELLIPSE EQUIPMENT No. 5000981573

ELLIPSE PLANT No. SST061140 JAUTOCODE No. 502892

Drawing No. 5000981573-SN-DR-04201103-01

